

⚡ NOTICE: ⚡

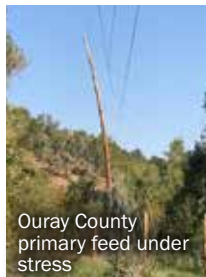
Road Closures on US 550 for Fire Mitigation work scheduled



Troublesome Fire, Near Granby, CO 2020



Rockfall Damage on Red Mtn. Pass



Ouray County primary feed under stress

The backup power line that serves Ouray County and traverses the Red Mountain Pass along US 550, needs to be re-built. This vital infrastructure project will greatly reduce the risk of wildfires, improve electrical reliability, and extend the local middle-mile fiber-optic network.



HWY 550 ROAD CLOSURES FOR FIRE MITIGATION, ELECTRICAL RELIABILITY AND BROADBAND IMPROVEMENT PROJECT ANNOUNCED:



Monday - Thursday September 13 th - 16 th	CLOSED 8:30 a.m. to 12 p.m. OPEN 12 p.m. to 1:00 p.m. CLOSED 1:00 to 5:30 p.m.	Friday September 17 th	CLOSED 8:30 a.m. to 12 p.m. OPEN 12 p.m. to 1:00 p.m. CLOSED 1:00 to 4:00 p.m.
--	--	--------------------------------------	--

(Highway open on weekends.)

Mon - Fri September 20 th - 24 th	CLOSED 8:30 a.m. to 12 p.m. OPEN 12 p.m. to 1:00 p.m. CLOSED 1:00 to 5:30 p.m.
--	--

This schedule is subject to weather conditions, project variables or other emergency circumstances.

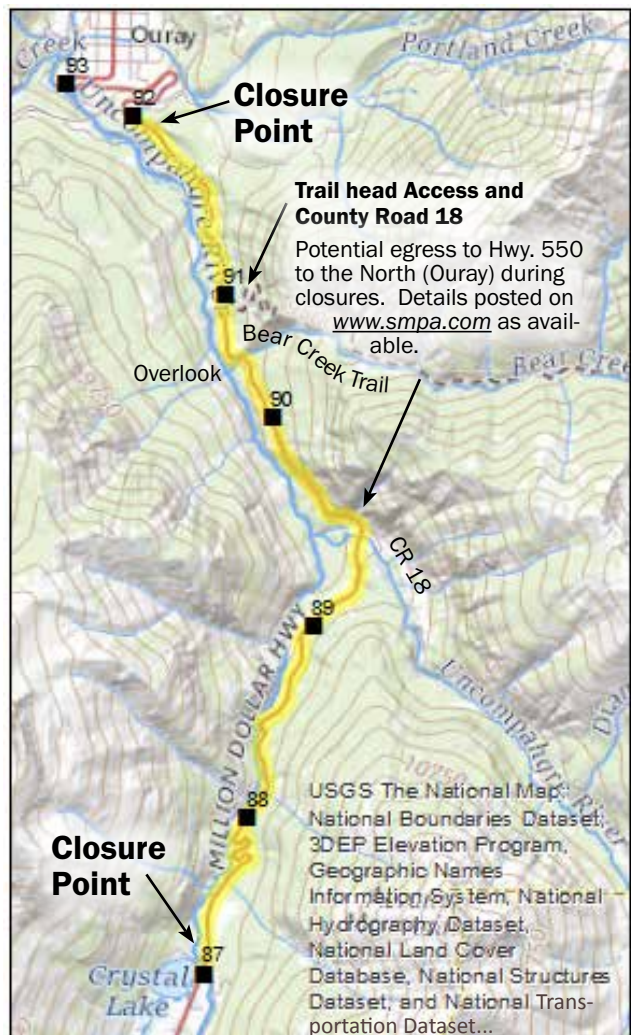
From Silverton, northbound the closure will be near MM 87. From Ouray, the southbound closure will be just south of Ouray, near MM 92. The highway will remain open overnight and on weekends.

If travelers cannot reach the closure points before the set closure times, they may consider the western alternate route via Colorado Highway 145 through Telluride. CO 145 can be reached from the south at Cortez via Colorado Highway 160 and from the north via Placerville (Colorado Highway 62) and Ridgway (US 550). Motorists should anticipate delays on CO 145 due to construction. Information about road conditions and delays is posted at:

 **COtrip** www.cotrip.org

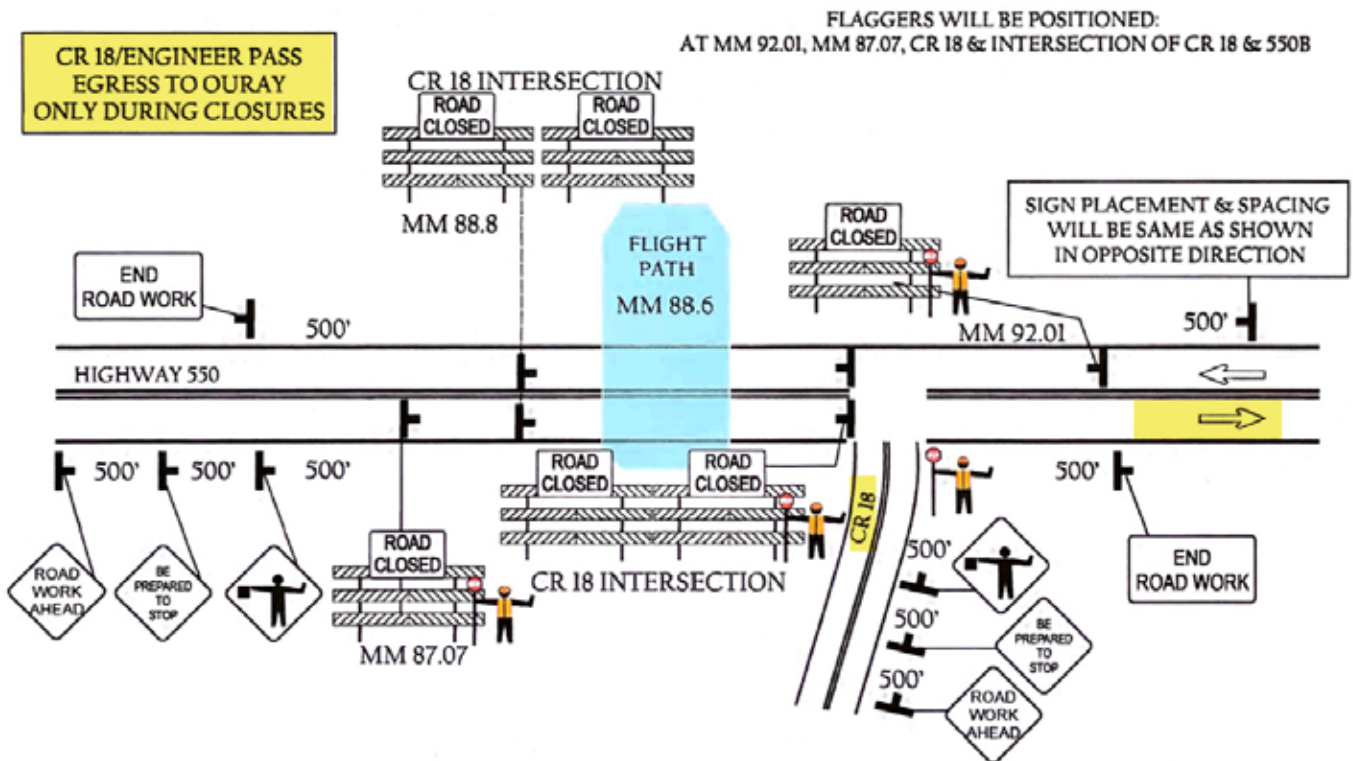
Learn more about the project at:

www.smpa.com/content/red-mountain-electrical-reliability-and-broadband-improvement-project





How will Road Closures on US 550 Affect Trail Use?



The road closures are subject to weather conditions, project variables or other emergency circumstances.
(See reverse for planned work schedule.)

- All of the Fire Mitigation and Helicopter work being planned during these closure periods will be conducted South of CR 18 {Engineer's Pass turn off} (between CR 18 and the closure point at MM 88.8 {Crystal Lake}). Even though the road North from Ouray will be closed at MM 92 (the Switzerland of America sign pullout) for traffic safety concerns.
- Those wishing to access the Alpine Loop at CR 18 can do so prior to 8:30 AM, between 12 -1 PM and after 5:30 PM during the closure weeks (after 4 PM on Friday the 17th), whether accessing from Silverton or Ouray.
- All vehicles (including tow or trailer vehicles) that are accessing or dropping off UTVs, as well as those traveling on CR 18, can return back to Ouray anytime during the planned closures.
- No vehicles can return South from CR 18 towards Silverton during the planned closure times, only during the open times.
- The above also applies to the Bear Creek Trail head.

Information about road conditions and delays is posted at: | **COtrip** www.cotrip.org

Learn more about the project at:

www.smpa.com/content/red-mountain-electrical-reliability-and-broadband-improvement-project