

# ENERGY WISE

YOUR SAN MIGUEL POWER MEMBER NEWSLETTER



## IN THIS ISSUE

Notables: Co-op Equipment Not Suitable for Target Practice.....	1	SMPA Wise Watts Compete.....	2
Save the Date: SMPA Annual Meeting.....	1	West End Reliability Project Fast Fact.....	2
		2015 Board Elections.....	2

APRIL  
2015



## CONTACT INFORMATION

**Nucla**  
170 W. 10th Ave.  
P.O. Box 817  
Nucla, CO 81424  
(970) 864-7311  
M - TH, 7:00 a.m. - 5:30 p.m.  
Toll Free: 1-877-864-7311

**Ridgway**  
720 N. Railroad St.  
P.O. Box 1150  
Ridgway, CO 81432  
(970) 626-5549  
T - F, 7:00 a.m. - 5:30 p.m.  
Toll Free: 1-800-864-7256

[www.smpa.com](http://www.smpa.com)  
[www.facebook.com/SanMiguelPower](https://www.facebook.com/SanMiguelPower)

In the event of a power outage, contact your local SMPA office. If it is after hours, you will be able to automatically transfer to our 24-hour dispatch.

## QUESTIONS OR COMMENTS

Send your questions or suggestions for the editors of EnergyWise to:  
[energywise@smpa.com](mailto:energywise@smpa.com)  
(970) 626-5549 x212

## SAFETY TIP

Take note of electrical lines when moving equipment, like irrigation pipes. Make sure everyone who works on the ranch knows the location of power lines and keeps farm equipment at least ten feet away.

This institution is an equal opportunity provider and employer. If you wish to file a Civil Rights program complaint of discrimination, complete the USDA Program Discrimination Complaint Form, found online at [http://www.ascr.usda.gov/complaint\\_filing\\_cust.html](http://www.ascr.usda.gov/complaint_filing_cust.html), or at any USDA office, or call (866) 632-9992 to request the form. You may also write a letter containing all of the information requested in the form. Send your completed complaint form or letter to us by mail at U.S. Department of Agriculture, Director, Office of Adjudication, 1400 Independence Avenue, S.W. Washington, D.C. 20250-9410, by fax (202) 690-7442 or email at [program.intake@usda.gov](mailto:program.intake@usda.gov).

## NOTABLES: Co-op Equipment Not Suitable for Target Practice



Kevin Ritter  
SMPA General Manager

*A message from your General Manager, Kevin Ritter*

Target practice is fun. But, when the targets become our transformers, substations, and other equipment, that fun quickly turns costly and dangerous. Just one bullet can seriously damage a transformer, resulting in thousands of dollars in repair costs, power outages, and even environmental consequences.

Historically, the most common target for vandalism has been the ceramic insulators on power poles, transformers, and other equipment. While this might sound like a minor issue, shooting an insulator often results in outages for anyone served off the line.

Our substations and transformers are critical pieces in our electric grid. When they are shot or damaged, entire regions can go without power, for substantial amounts of time. Substation transformers are not easy to replace. In some cases there is up to a year of lead time if a new one is ordered. Just one substation transformer can cost as much as \$800,000. When their lifecycle is cut short by vandalism the co-op, and ultimately our members, are faced with unexpected

and unwarranted costs. Power outages are inconvenient, but they can be the least serious consequence of vandalism. Our mem-



An example of a 15KVA distribution transformer that has been shot and damaged beyond repair.

*VANDALISM IMPACTS MEMBERS cont. on page 2*

**SAVE THE DATE**  
SAN MIGUEL POWER ANNUAL MEETING  
**LIFE ON THE LINE**  
ALL SMPA MEMBERS WELCOME!  
THURSDAY, JUNE 11, 2015  
SMPA RIDGWAY OFFICE  
720 N. RAILROAD STREET  
5:30 PM  
**D2 BOARD ELECTIONS | YEAR IN REVIEW | REFRESHMENTS**



## SMIPA WISE WATTS

### GREAT COSTUMES, NOT-SO-GOOD SPELLERS



San Miguel Power participated in the Telluride Historical Museum's Adult Spelling Bee last month. The SMIPA Wise Watts advanced to round two after a narrow one-word victory over their opponents, but were quickly ousted after incorrectly spelling paraphernalia. The trio was made up of (from L to R) Communications Executive, Becky Mashburn, Billing Representative Keri Kling, and GIS Specialist Jackie Sinclair. Despite the spelling snafu, the team was selected as a finalist in the costume division.

# 2015 ELECTION

## District Two Board Nominations Due this Month

**Running for the board:** District Two members interested in seeking candidacy for San Miguel Power's Board of Directors must return their nomination petition by 5:30 p.m. on Monday, April 27. Interested candidates must reside in and or maintain their primary electric account in District Two. District Two includes the Town of Telluride from Townsend Avenue, east of South Tomboy and North Townsend Streets, north to Tomboy Road and east to approximately .5 mile from Royer Lane.

## VANDALISM IMPACTS MEMBERS

*NOTABLES cont. from page 1*

bers that depend on electricity to power important medical devices for themselves or family members are severely impacted. The economic well-being of our entire service territory also suffers.

Transformers are filled with mineral oil that protects the internal components and prevents arcing. Bullet holes quickly become drain holes for that oil. A shot up transformer is beyond repair and the soil in the surrounding area is saturated with oil. Cleanup requires extensive composite testing for oil levels, excavation, and disposal in facilities certified to accept contaminated dirt. The environmental cleanup costs are significant.

San Miguel Power has been lucky. Our important equipment is rarely

the target of vandalism. But we do lose a number of security and yard lights every year. In some cases just the bulb or photo cell is in need of replacement and in others the entire light fixture is a loss.

But not matter the scope of the vandalism, all damage requires additional time, labor, and money. Our members – you – already do a great job of taking care of our distribution system. But vandalism can and does happen. If you notice equipment that has been shot, tagged, or hit report it to us immediately, and or course, call law enforcement. For SMIPA vandalism results in high costs, power outages, environmental concerns, and potential dangers. But remember, it is also a criminal act. Reporting it helps keep our system and your community safe.

Members can locate their district assignment on their bill. Members with multiple electric accounts can determine their primary account by calling SMIPA. Relatives of SMIPA employees and current board members are not eligible. A complete list of director eligibility guidelines is available at [www.smpa.com](http://www.smpa.com).

Nomination petition forms are available at either SMIPA office in Nucla or Ridgway, CO. The nomination petition must be signed by 15 or more registered members from District Two and returned to SMIPA on or before 5:30 p.m., April 27, 2015. SMIPA will not be responsible for missed deadlines due to delays in mail service. Petitions can be mailed to or dropped off in person at any of the following office locations:

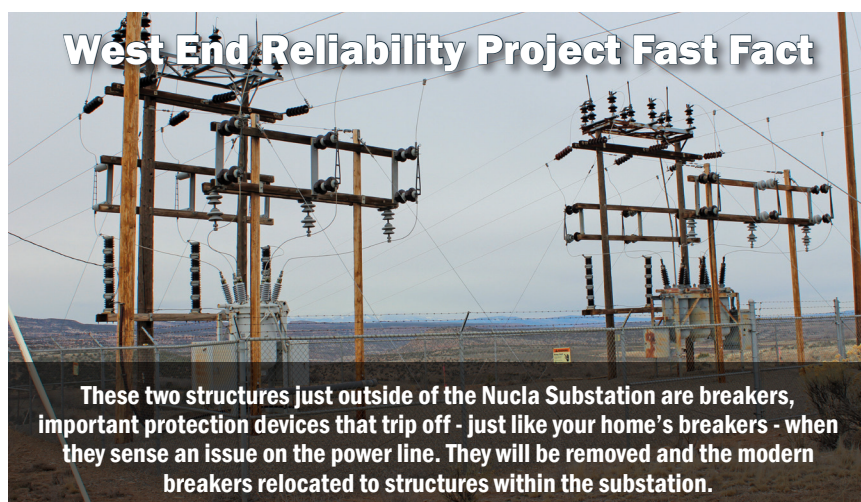
**Mailing Address**

P.O. Box 1150, Ridgway, CO 81432  
P.O. Box 817, Nucla, CO 81424

**Physical Address**

170 W. 10th Ave., Nucla, CO 81424  
720 N. Railroad St., Ridgway, CO 81432

**Voting for your representative:** Ballots will be mailed to District Two members in late May. Ballots must be returned by mail to the independent election post office box or dropped off in person to the lock box in the front lobby of either SMIPA office (Ridgway or Nucla) by 5:30 p.m., June 10, 2015. The District Two elections will conclude at SMIPA's Annual Meeting on June 11, 2015, 5:30 p.m. The Annual Meeting will be held at SMIPA's office in Ridgway, CO, 720 North Railroad Street. The election results will be announced at the meeting.



### West End Reliability Project Fast Fact

These two structures just outside of the Nucla Substation are breakers, important protection devices that trip off - just like your home's breakers - when they sense an issue on the power line. They will be removed and the modern breakers relocated to structures within the substation.

For more information contact Toni, [toni@smpa.com](mailto:toni@smpa.com), (970) 626-5549 x210.