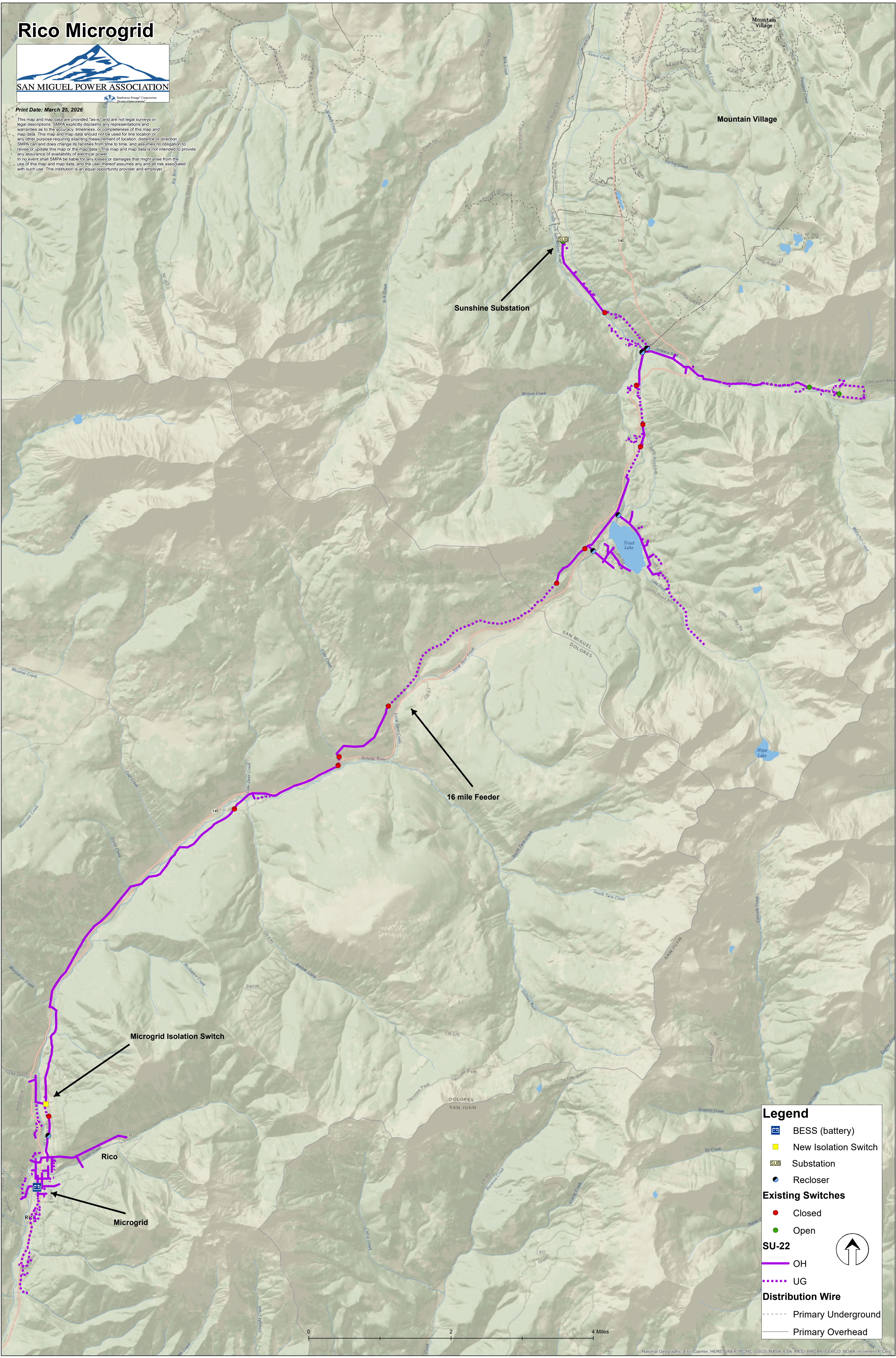


Rico Microgrid



Print Date: March 25, 2026

This map and map data are provided "as-is" and are not legal surveys or legal descriptions. SMPA explicitly disclaims any representations and warranties as to the accuracy, timeliness, or completeness of this map and map data. This map and map data should not be used for title location or any other purpose requiring exacting measurement of location, distance or direction. SMPA can and does change its facilities from time to time, and assumes no obligation to revise or update this map or the map data. This map and map data is not intended to provide any assurance of availability of electrical power. In no event shall SMPA be liable for any losses or damages that might arise from the use of this map and map data, and the user thereof assumes any and all risk associated with such use. This institution is an equal opportunity provider and employer.



Legend

- BESS (battery)
- New Isolation Switch
- Substation
- Recloser
- Existing Switches**
- Closed
- Open
- SU-22**
- OH
- UG
- Distribution Wire**
- Primary Underground
- Primary Overhead